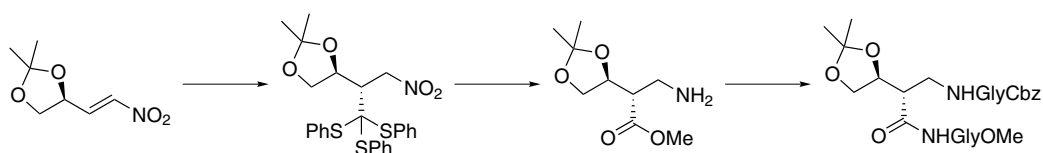


Contents

COMMUNICATIONS

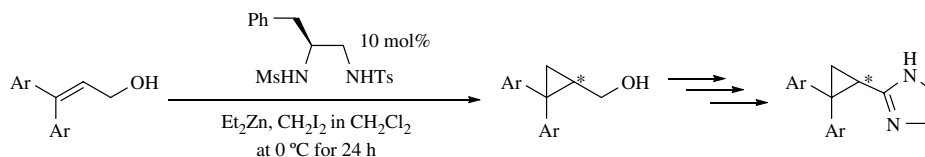
**Preliminary studies on a novel synthesis of  $\beta$ -amino acids: stereocontrolled transformation of D- and L-glyceraldehyde into 3-amino-2-(2',2'-dimethyl-1',3'-dioxolan-4'-yl)propanoic acids** pp 3063–3066

Fernando Fernández, José M. Otero, Juan C. Estévez and Ramón J. Estévez\*



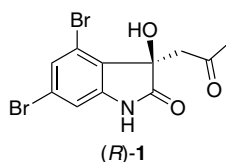
**Syntheses of (*R*)-(+)-cibenzoline and analogues via catalytic enantioselective cyclopropanation using (*S*)-phenylalanine-derived disulfonamide** pp 3067–3069

Tsuyoshi Miura, Yasuoki Murakami and Nobuyuki Imai\*



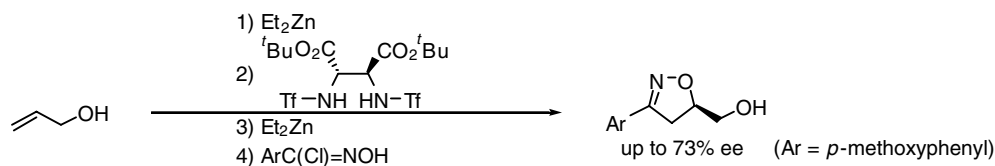
**Convolutamydine A: the first authenticated absolute configuration and enantioselective synthesis** pp 3070–3074

Giancarlo Cravotto, Giovanni B. Giovenzana, Giovanni Palmisano,\* Andrea Penoni, Tullio Pilati, Massimo Sisti and Federica Stazi



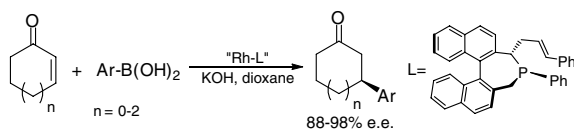
Preparation of novel *N*-sulfonylated (*S,S*)-2,3-diaminosuccinate-type chiral auxiliaries and application to an asymmetric 1,3-dipolar cycloaddition reaction of nitrile oxides to allyl alcohol pp 3075–3083

Masakazu Serizawa, Yutaka Ukaji\* and Katsuhiko Inomata\*



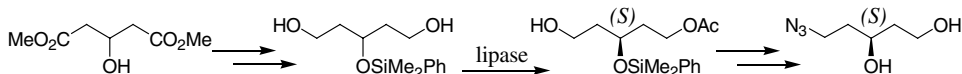
A chiral phosphine–olefin rhodium complex as an efficient catalyst for the asymmetric conjugate addition pp 3084–3090

Peter Kasák, Vladimir B. Arion and Michael Widhalm\*



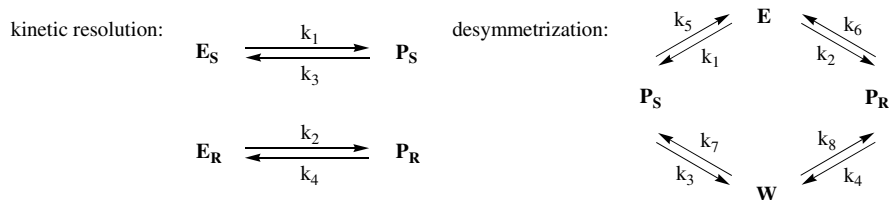
Lipase catalyzed enantioselective desymmetrization of a prochiral pentane-1,3,5-triol derivative pp 3091–3099

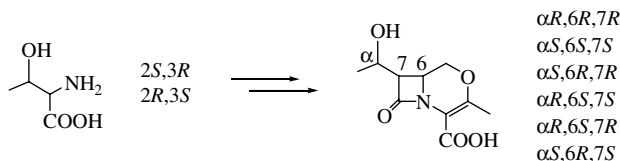
Jens Köhler and Bernhard Wünsch\*



Computer simulation of asymmetric transformations pp 3100–3110

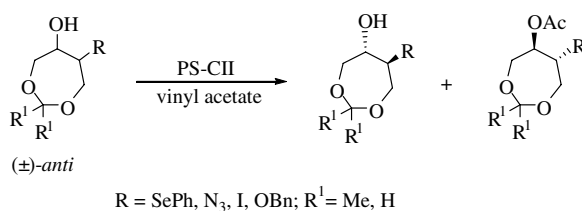
Jens Köhler and Bernhard Wünsch\*





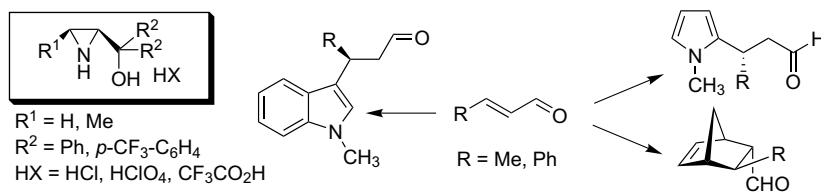
Lipase-catalyzed resolution of *anti*-6-substituted 1,3-dioxepan-5-ols

Michelangelo Gruttadauria,\* Paolo Lo Meo, Serena Riela, Francesco Giacalone and Renato Noto



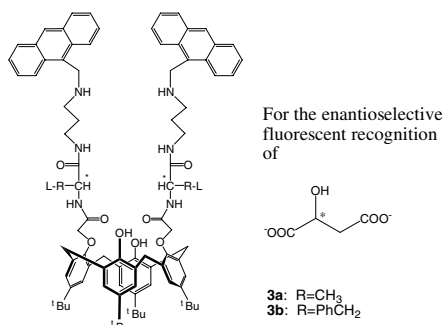
Aziridin-2-yl methanols as organocatalysts in Diels–Alder reactions and Friedel–Crafts alkylations of *N*-methyl-pyrrole and *N*-methyl-indole

Bianca F. Bonini,\* Elena Capitò, Mauro Comes-Franchini, Mariafrancesca Fochi, Alfredo Ricci and Binne Zwanenburg

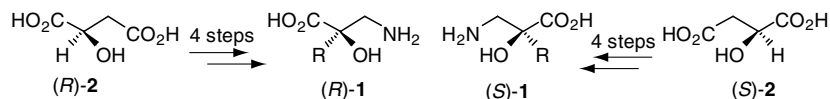


Sensitive fluorescent sensors for malate based on calix[4]arene bearing anthracene

Guang-yan Qing, Yong-bing He,\* Zhi-hong Chen, Xiao-jun Wu and Ling-zhi Meng

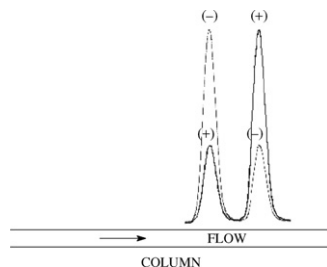


Yan Huang, Yong-Bo Zhang, Zhi-Ce Chen and Peng-Fei Xu\*



Energy barrier determination of enantiomerization of chiral 3,4-dihydro-1,2,4-benzothiadiazine 1,1-dioxide type compounds by enantioselective stopped-flow HPLC

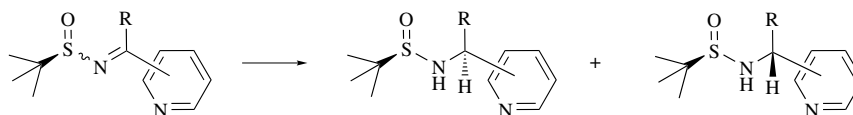
Giuseppe Cannazza,\* Daniela Braghiroli, Piera Iuliani and Carlo Parenti



Racemization of individual peak during stopped flow condition.

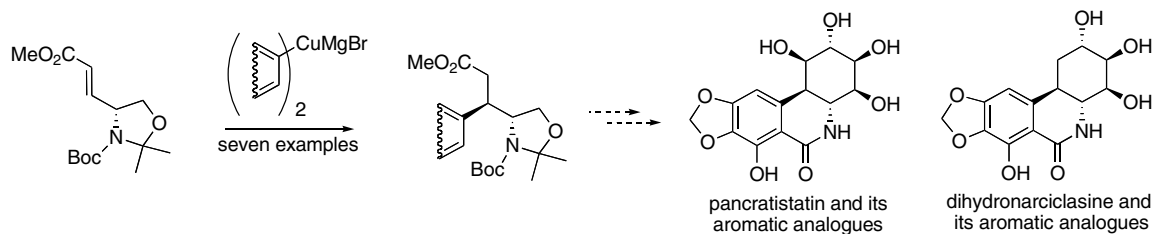
An easy route to optically active 1-substituted-1-pyridyl-methylamines by diastereoselective reduction of enantiopure *N*-*tert*-butanesulfinyl ketimines

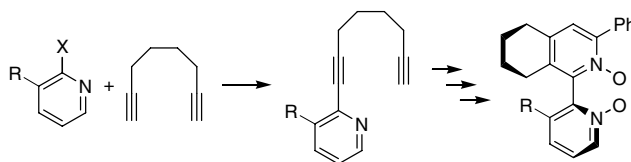
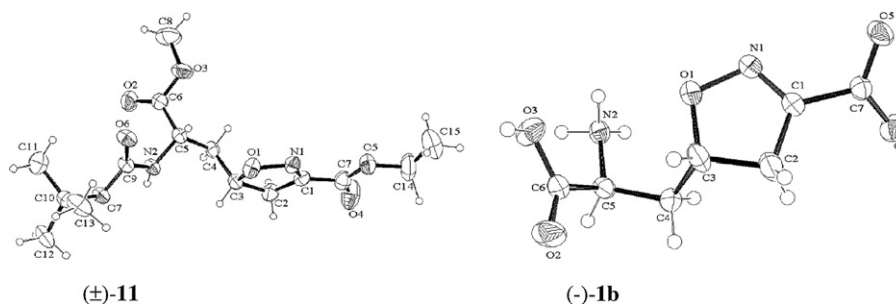
Giorgio Chelucci,\* Salvatore Baldino, Simona Chessa, Gerard A. Pinna and Franco Soccolini



A solution to the stereochemical problems posed by amaryllidaceae constituents using a highly *syn*-selective arylcuprate conjugate addition to  $\gamma$ -amino and  $\gamma$ -carbamato- $\alpha,\beta$ -enoates

Shiva K. Rastogi and Alexander Kornienko\*





## OTHER CONTENTS

Corrigendum

p 3192

Stereochemistry abstracts

pp A667–A696

Instructions to contributors

pp I–IV

Cumulative author index

pp V–XII

\*Corresponding author

Available online at [www.sciencedirect.com](http://www.sciencedirect.com)



Indexed/Abstracted in: Beilstein, BIOSIS Previews, Chemical Abstracts, Current Contents: Physical, Chemical and Earth Sciences, Derwent Biotechnology Abstracts, Derwent Drug File, Ei Compendex, EMBASE/Excerpta Medica, PASCAL, Research Alert, Science Citation Index, SciSearch. Also covered in the abstract and citation database SCOPUS®. Full text available on ScienceDirect®



ISSN 0957-4166